



October 03, 2016

Steve Smith
Safety Director
Best Company
1234 Main Street
Kansas City, MO 64555

Re: General Industry Safety Survey
Omaha, NE

Steve,

This report is in follow-up to the safety survey completed on October 02, 2016. The purpose of the survey was to identify potential safety hazards and/or OSHA violations. Tim Miller is the contact person at this location.

Attached, is a list of safety observations and recommendations based on conditions present at the time of my visit. If you have any questions or require additional information after reading this report, please don't hesitate to contact me.

Sincerely,

John Doe

John Doe
President/Owner
Safety-Reports, Inc.
Phone: (402) 403-6575
Email: johndoe1963@cox.net

CC: Bill Johnson
Tom Jackson

Observations and recommendations are purely advisory and based on practices and conditions observed and information provided at the time of this survey. They are not intended to include every loss or accident potential. It's the client's responsibility to make further observations and take whatever action that may be necessary to prevent losses, enforce safety procedures and eliminate hazardous conditions so as to comply with any federal, state, or local law, rule or regulation concerning safety and health.

General Industry Report

Completed for: Best Company
Report Name: General Industry
Location: Omaha, NE
Contact: Tim Miller, Shop Manager

Inspection Date: October 02, 2016
Scope of Work: Monthly Safety Walk-through
Score: 66%

Observations

Compressed Air

Observation **Not all air nozzles are equipped with relief ports and/or relief ports are blocked (1910.242)**
Recommendation *Only use air nozzles equipped with relief ports to discharge sufficient air to reduce the air pressure at the nozzle tip to less than 30 p.s.i. [reference 1910.242(b)]. [View OSHA Standard](#)*

Responsible Party: Fabrication Manager

Photo(s)



Non approved air nozzle in fab shop



Example of an approved air nozzle



Example of an approved air nozzle



Non approved air nozzle

Compressed Gas Cylinders

Observation **Not all cylinders are secured to prevent tipping (1910.101)**

Recommendation *Take appropriate steps to secure compressed gas cylinders in an upright position to prevent them from tipping over in accordance with Compressed Gas Association Pamphlet P-1-1965 [incorporated by reference in Sec. 1910.6]. [View OSHA Standard](#)*

Notes: Cylinders need to be secured to prevent tipping in outside storage area.

Severity Rating: Moderate

Responsible Party: Maintenance Manager

Photo(s)



Proper Cylinder storage



Cylinders not secured to prevent tipping

Observation **Not all valve caps are replaced when cylinders are not in use (1910.101)**

Recommendation *Take steps to ensure all valve caps are replaced on compressed gas cylinders when not in use in accordance with Compressed Gas Association Pamphlet P-1-1965 [incorporated by reference as specified in Sec. 1910.6]. [View OSHA Standard](#)*

Notes: Safety caps are not replaced on all stored cylinders

Severity Rating: Moderate

Responsible Party: Fabrication Manager

Photo(s)



Safety cap missing

Cranes/Rigging

Observation Frequent crane inspections occur (1910.179)

Observation **The rated load of each hoist is not marked and/or clearly legible from the ground or floor (1910.179)**

Recommendation *Mark the rated load of the crane on each side of the crane and be sure it is clearly legible from the ground or floor [reference 1910.179(b)(5)]. [View OSHA Standard](#)*

Photo(s)



Load limit on jib crane is not visible

Observation Pendants are clearly marked for identification of functions (1910.179)

Observation **Not all lifting hooks have functional safety latches (1910.179)**

Recommendation *Visually inspect hooks daily for defects (i.e. twisted, pitted, throat opening too wide, broken/missing safety latch, etc.) and repair and/or replace hooks when defects are found [reference 1910.179(j)(2)(iii)]. [View OSHA Standard](#)*

Severity Rating: Moderate

Responsible Party: Fabrication Manager

Photo(s)



Safety latch is broken on hook in Fab shop



Damaged hook in fab area



Non-approved lifting hook in Fab Shop

Observation The crane and below-the-hook lifting devices are sufficiently rated for the load (1910.179)

Observation Hoists are equipped with functional overtravel limit-switch (1910.179)

Observation **Slings are not maintained in good condition and/or they contain kinks or knots (1910.184)**

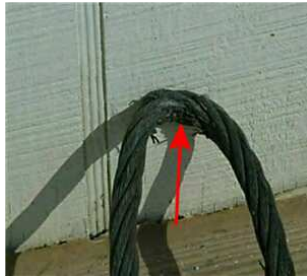
Recommendation *Damaged or defective slings shall not be used. Additionally, slings shall not be shortened with knots or bolts or other makeshift devices and sling legs shall not be kinked. [reference 1910.184(c)(1),(2),&(3)] [View OSHA Standard](#)*

Notes: Severely damaged sling should be removed from service

Severity Rating: Advisory

Responsible Party: Maintenance Manager

Photo(s)



Damaged sling

Observation ID tags are legible and affixed to slings (1910.184)

Electrical Safety

Observation Breaker switches are identified/legibly marked to indicate their purpose (1910.303)

Observation **Access to breaker panels, disconnects, etc. is obstructed (i.e. proper clearance not maintained) and/or the area around transformers and other electrical equipment is not kept clear. (1910.303)**

Recommendation *Take steps (i.e. paint lines on floor, use railing, cones, etc.) to maintain sufficient access and working space (min. 30 inches wide by 36 inches deep) in front of all electric equipment including breaker panels, disconnect switches, transformers, etc. [reference 1910.303(g)(1)]. [View OSHA Standard](#)*

Responsible Party: Maintenance Manager

Photo(s)



Blocked electrical panels



Blocked panels

Observation Unused openings in panels/cabinets are closed (1910.305)

Observation Flexible cords are free of damage/fraying (1910.334)

Observation Flexible cords have ground pin (1910.334)

Exits/Egress

Observation All exit discharges lead directly outside the facility (1910.36)

Observation Exit doors in high occupancy/high hazard areas open out in direction of travel (1910.36)

Observation **The direction of travel to exits is not marked when not apparent (1910.37)**

Recommendation *If the direction of travel to the exit or exit discharge is not immediately apparent, post signs along the exit routes indicating the direction of travel to the nearest exit and exit discharge [reference 1910.37(b)(4)]. [View OSHA Standard](#)*

Responsible Party: Maintenance Manager

Observation Non-exit doors are marked NOT AN EXIT as required (1910.37)

Photo(s)



Observation Exits and pathway to exits are free of obstructions (1910.37)

Observation **Emergency lights are not provided and/or not all functional (1910.37)**

Recommendation *Install emergency lighting as needed to ensure adequate lighting of all exit routes and doors during a power failure. Also, lighting should be tested monthly to ensure batteries are not dead or bulbs burned out. Repair/replace as needed [reference 1910.37(b)(1)].*
[View OSHA Standard](#)

Notes: Need to inspect all emergency lights. At least two were found to not work when test button was depressed.

Responsible Party: Maintenance Manager

Photo(s)



Emergency lights not working when test button is depressed



Emergency lights not working above east door in warehouse

Fire Safety

Observation Portable fire extinguishers are mounted (1910.157)

Observation Portable fire extinguishers are unobstructed (1910.157)

Observation Portable fire extinguishers identified by signage (1910.157)

Observation Portable fire extinguishers are inspected monthly (1910.157)

Observation Portable fire extinguishers are maintained annually (1910.157)

Flammable Liquids

Observation Flammable storage cabinets labeled properly (1910.106)

Photo(s)



Observation

More than 25 gallons of Category 1 flammable liquids are stored outside of approved storage cabinet or storage room (1910.106)

Recommendation

The quantity of Category 1 flammable liquids that may be located outside of an inside storage room or storage cabinet in a building or in any one fire area of a building shall not exceed 25 gallons. [reference 1910.106(e)(2)(ii)(b)(1)] [View OSHA Standard](#)

Responsible Party: Maintenance Manager

Photo(s)



Flammable not being stored properly



Flammable not stored properly

Grinders (Bench/Pedestal)

Observation

The tongue guard is not adjusted to within 1/4 inch of wheel (1910.215)

Recommendation

Adjust (or install if missing) the tongue guard on grinders to within one-fourth inch of the wheel [reference 1910.215(b)(9)]. [View OSHA Standard](#)

Severity Rating: Moderate

Responsible Party: Maintenance Manager

Photo(s)



Tongue guard missing



Guards missing on bench grinder

Observation **Bench/pedestal grinders are not all permanently mounted (1910.212)**
Recommendation *Make sure all equipment (i.e. bench or pedestal grinders) designed for a fixed location are securely anchored to prevent walking or moving [reference 1910.212(b)]. [View OSHA Standard](#)*

Severity Rating: Advisory
Responsible Party: Maintenance Manager

Photo(s)



Grinder is not mounted to bench top

Hazard Communication

Observation A chemical inventory list or index is maintained (1910.1200)
Observation **Not all hazardous chemicals are properly labeled (1910.1200)**
Recommendation *Take steps to ensure that all hazardous chemical containers (original and secondary containers) are properly labeled. Labels must not be removed or defaced [reference 1910.1200(b)(3)(i)]. [View OSHA Standard](#)*

Responsible Party: Maintenance Manager

Photo(s)



Improper labeling



Improper labeling

Observation Safety Data Sheets (SDSs) for hazardous chemicals are readily accessible to all employees/all shifts (1910.1200)

Housekeeping

Observation **Not all work areas are kept clean and orderly (1910.141)**
Recommendation *Take steps to ensure all places of employment are kept clean and organized to the extent that the nature of the work allows [reference 1910.141(a)(3)(i)]. [View OSHA Standard](#)*

Photo(s)



Poor housekeeping in warehouse



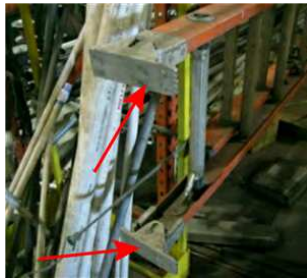
Housekeeping issue in electrical room

Ladders (Portable)

Observation **Step ladder(s) found with missing or damaged non-slip safety feet (1910.26)**

Recommendation *Immediately remove from service any step ladder that has damaged or missing non-slip feet [reference 1910.26(a)(3)(vii)]. [View OSHA Standard](#)*

Photo(s)



Safety feet missing

Observation Specification label in place/legible (ANSI A14)

Machine Guards (General)

Observation **Not all point-of-operation hazards are properly guarded (1910.212)**

Recommendation *Install safeguards at the point of operation of machines to prevent employees from placing a body part in the danger zone during the operating cycle [reference 1910.212(a)(3)(ii)]. [View OSHA Standard](#)*

Responsible Party: Maintenance Manager

Photo(s)



Self-adjusting guard is bypassed

Observation **Rotating parts hazards are not all properly guarded or shielded (1910.212)**
Recommendation *Install guards or shields on machines to prevent placing a body part in the rotating parts hazard of a machine (i.e. chuck guard or shield on drill presses or lathes, fixed guard on rotating shaft, etc.) [reference 1910.212(a)(3)(ii)]. [View OSHA Standard](#)*

Responsible Party: Maintenance Manager

Photo(s)



Chuck guard needed on drill press

Medical Services/First Aid

Observation **Issues relating to Medical/First Aid standards (1910.151) were identified (see notes/photos for detail)**
Recommendation *Review OSHA regulations on Medical Services/First Aid (1910.151) and adhere to applicable requirements in the standard. Reference comments, notes and/or photo(s) for details. [View OSHA Standard](#)*

Notes: Saline rinse bottles need to be inspected to ensure they are current/not expired.

Severity Rating: Advisory

Responsible Party: Warehouse Manager

Photo(s)



Saline rinse bottles are past expiration

Postings/Signs

Observation OSHA Poster is prominently displayed (1903.2)
Observation Caution signs are posted as needed/required to warn employees of potential hazards (1910.145)

Recordkeeping (Injury/Illness)

- Observation** Work-related fatalities, injuries, and illnesses are properly documented on the OSHA 300 Log [1904.4(a)(1)]
- Observation** Work-related bloodborne incidents (needlestick/cuts) are properly recorded (1904.8)
- Observation** Hearing loss incidents resulting in Standard Threshold Shift (STS) are recorded (1904.10)
- Observation** The OSHA 301 Incident Report form (or equivalent) is completed for each recordable injury or illness entered on the OSHA 300 Log (1904.29)
- Observation** Recordable Incidents are recorded on the OSHA 300 Log no later than seven calendar days of receiving the information that a recordable injury or illness has occurred (1904.29)
- Observation** Annual summary (OSHA form 300A) is properly certified (signed by senior management) (1904.32)
- Observation** Annual summary (OSHA form 300A) is completed and posted in a conspicuous location between February 1 and April 30 of following year (1904.32)

Stairs and Stairways

- Observation** Handrails are provided on stairs with 4 or more risers (1910.23)
- Observation** Riser height and tread width are uniform (1910.24)
- Observation** Treads on stairs are slip-resistant and maintained (1910.24)

Storage

- Observation** **Materials are not all stored/stacked safely (1910.176)**
- Recommendation** *Materials in storage should be stacked, blocked, interlocked and limited in height so that they are stable and secure against sliding or collapse. Avoid leaning items on end unless secured to prevent them from falling over [reference 1910.176(b)]. [View OSHA Standard](#)*

Responsible Party: Warehouse Manager

Photo(s)



Product stored in warehouse needs to be banded or use shrink wrap when staking on top shelf.

- Observation** Storage racks are installed square and plumb (ANSI MH16.2)
- Observation** Storage racks are properly anchored to the floor (ANSI MH16.2)
- Observation** Storage rack columns in high traffic areas are protected from damage (ANSI MH16.2)
- Observation** Load capacity signs are posted on steel storage racks (ANSI MH16.2)
- Observation** Cross members on steel storage racks are held in place with pins, clamps, bolts, etc. (ANSI MH16.2)

Tools (Hand & Power)

Observation **Tools are not all inspected and maintained in good condition (1910.242)**

Recommendation *Require employees to inspect and maintain tools and equipment in a safe condition. Tag and remove from service any damaged or defective tools until repairs can be made or discard if repairs are not possible [reference 1910.242(a)]. [View OSHA Standard](#)*

Responsible Party: Fabrication Manager, Maintenance Manager

Photo(s)



Damaged hammer



Damaged shaft on hammer

Observation **All angle grinders are not properly guarded (1910.243)**

Recommendation *Require use of safety guards on portable angle grinders and the guard must be located between the operator and the wheel during use [reference 1910.243(c)(3)]. [View OSHA Standard](#)*

Responsible Party: Fabrication Manager, Maintenance Manager

Photo(s)



Guard missing on angle grinder



Guard missing on grinder



Guard missing on grinder

Welding, Cutting and Brazing

Observation **Adequate ventilation is not provided for welding operations (1910.252)**

Recommendation *Provide local exhaust or general ventilating systems to keep the amount of welding fumes below the maximum allowable concentration as specified in 1910.1000 [reference 1910.252(c)(1)(iii)]. [View OSHA Standard](#)*

Notes: Ventilation system in Maintenance Shop is suspect at best. Need IH to conduct testing to ensure proper ventilation is provided.

Responsible Party: Maintenance Manager

Observation Electrodes are removed from holders when not in use (1910.252)

Observation

Welding curtains are located to protect workers adjacent to welding areas (1910.252)

Photo(s)



Observation

Oxygen cylinders are separated from fuel-gas cylinders by 20' or a 5' fire wall (1910.253)

Observation

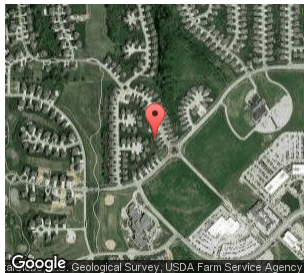
Regulators are removed and valve caps replaced when cylinders are in storage (1910.253)

Closing Comments:

Several issues to address. Spoke to Tim regarding the results of this audit and he assured me steps will be taken to address deficiencies noted.


Submitted by:
 John Doe
 President/Owner
 Safety-Reports, Inc.
 (402) 403-6575
 johndoe1963@cox.net

Observations and recommendations are purely advisory and based on practices and conditions observed and information provided at the time of this survey. They are not intended to include every loss or accident potential. It's the client's responsibility to make further observations and take whatever action that may be necessary to prevent losses, enforce safety procedures and eliminate hazardous conditions so as to comply with any federal, state, or local law, rule or regulation concerning safety and health.



Geo-Tag Information:
Latitude: 41.268366
Longitude: -96.203879
Date: 10/02/2016
Time: 03:53 PM (central)

Inspection/report/audit verified by:

x 
 Sunday, October 02, 2016 15:52:13 PM (central)